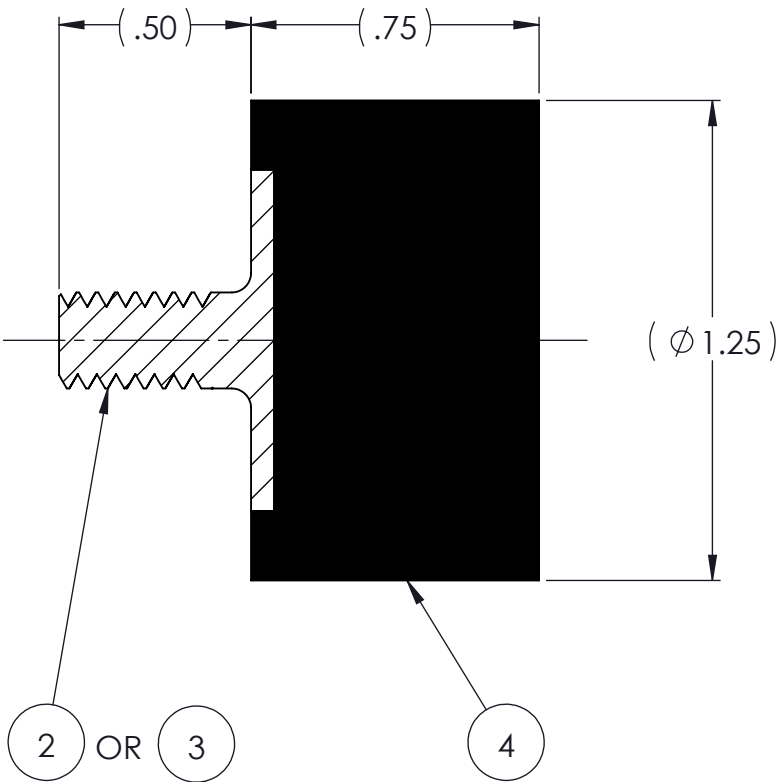
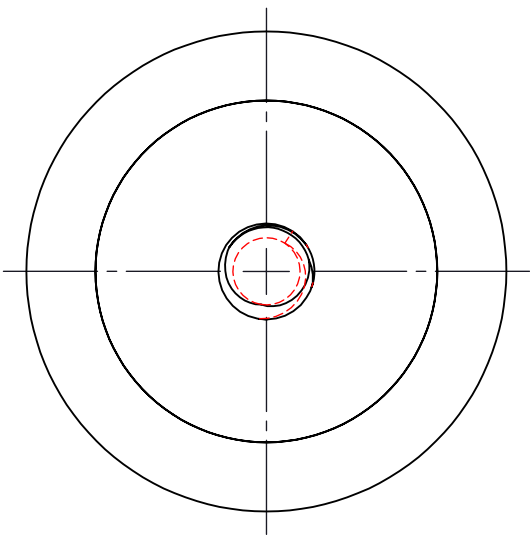
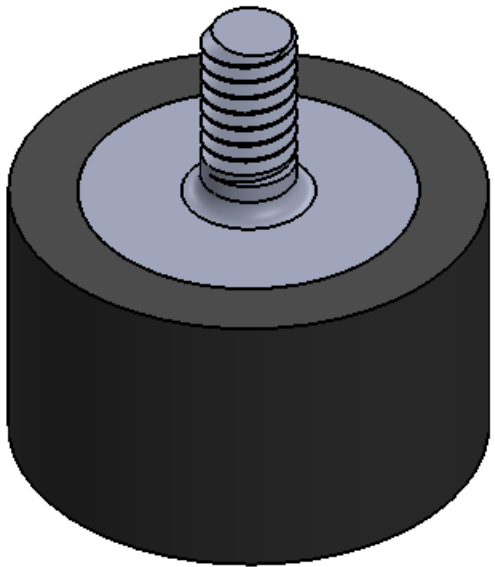


REVISIONS			
REV.	DESCRIPTION	DATE	APPROVED
1	INITIAL RELEASE OF DRAWING	8/26/2014	BS




NOTES:

- 1 MATERIAL: ELASTOMER AND DUROMETER OF 40, 50, 60 OR 70 TO BE SPECIFIED.
- 2 ALL DIMENSIONS ARE REFERENCE.
- 3 AVAILABLE WITH THREADS OF 1/4-20 UNC X 1/2" AND M6 X 1.0 X 1/2".

AR	ELASTOMER	K148A-4	1	4
1	MK470-M6	MK470-M6		3
1	MK470-AA	MK470-AA		2
	K148A	K148A		1
QTY.	DESCRIPTION	PART NUMBER	MATERIAL OR NOTES	ITEM

PROPRIETARY AND CONFIDENTIAL <small>THE INFORMATION CONTAINED IN THIS DRAWING IS THE SOLE PROPERTY OF KARMAN RUBBER. ANY REPRODUCTION IN PART OR AS A WHOLE WITHOUT THE WRITTEN PERMISSION OF KARMAN RUBBER IS PROHIBITED.</small>	SIGNATURE		DATE	UNLESS OTHERWISE SPECIFIED: DIMENSIONS ARE IN INCHES TOLERANCES: .X = .XX = ± 0.031 .XXX = ANGLES = ±1° INTERPRET GEOMETRIC TOLERANCING PER: ASME Y14.5M-1994
	DRAWN	B. SENECAL	08/26/2014	
	CHECK	S. BROWN	08/26/2014	
	ENGR	B. SENECAL	08/26/2014	
	QA			
	STRESS			
	APPR			



FOR CONTROLLING NOISE, SHOCK & VIBRATION

B	SIZE	CAGE CODE
	DO NOT SCALE DRAWING	

TITLE: K148A SERIES VIBRO-INSULATOR WWW.KARMAN.COM			
DWG. NO. K148A		REV 1	
SCALE: 2:1	WEIGHT: 1.3 OZ.	SHEET 1 OF 1	